



Specialists in the Precision Processing of Dry Materials

Vibra Screw Inc.

755 Union Boulevard, Totowa, New Jersey 07512 • Fax (973) 256-7567 • Tel (973) 256-7410

HEAVY-DUTY METERING CONVEYORS

**Reliable,
Low-Cost
Metering
of Dry
Materials**

Screw Sizes to 16", Capacities to 9,800 cu ft/hr

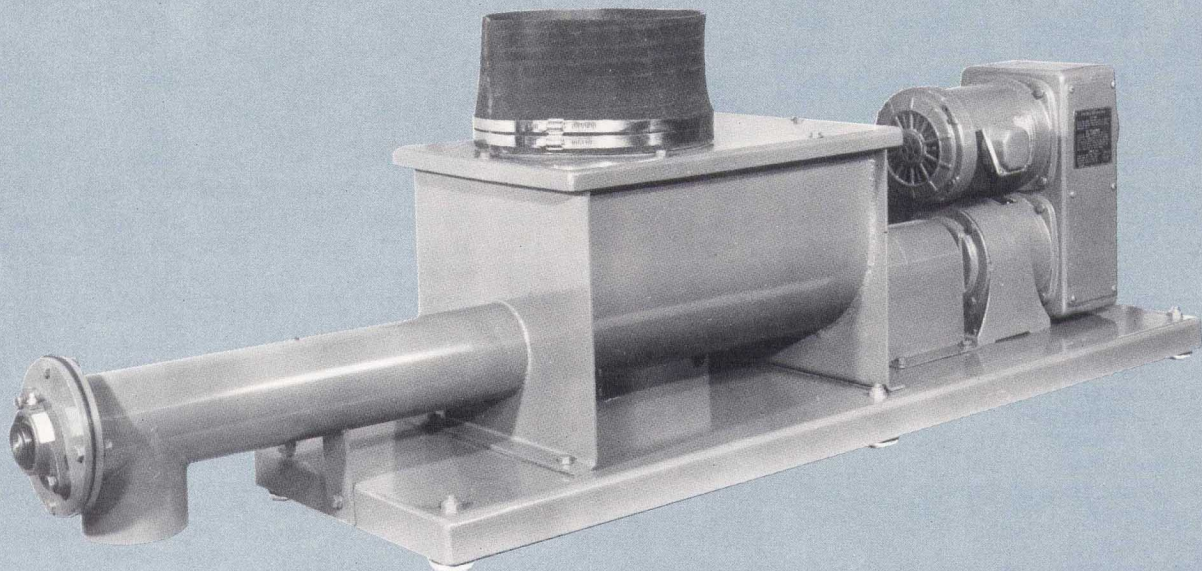
The Vibra Screw Metering Conveyor provides extremely reliable and economical feeding of a wide range of dry bulk materials. Standard units are available in screw diameters from 4 to 16 inches for a capacity range of 20 to 9,800 cubic feet per hour.

Extended screw lengths of up to 12 feet from center of inlet to outlet permit the unit to meet most short distance conveying needs.

When combined with vibratory pre-feed equipment such as the Vibra Screw Bin Activator, Live Bottom Bin, or Live Bin, the

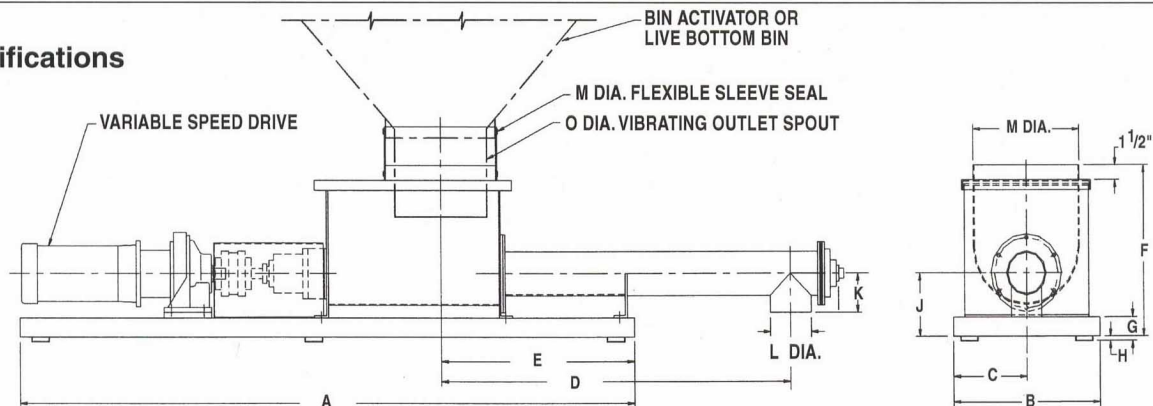
Metering Conveyor will deliver minute-to-minute feed accuracies of $\pm 2\%$ with most materials. A rigid, vibrating outlet spout extends down into the feeder trough from the pre-feed equipment to ensure complete filling of the screw flights with uniformly dense material.

Construction is simple and rugged with a heavy duty transmission, sealed and grease lubricated bearings, a flight screw with through shaft and trough end seals.



HEAVY-DUTY METERING CONVEYORS

Specifications



Dimensions inches (mm)

Size	A	B	C	D	E	F	G	H	J	K	L	M	N	O	Max HP	CU FT (CU M) Hr.
4 (102)	61 (1549)	16 1/2 (419)	8 1/4 (210)	26 (660)	17 (432)	17 7/8 (454)	2 3/8 (60)	3/8 (10)	7 (178)	4 (102)	4 1/2 (114)	12 (305)	5 1/8 (130)	10 (254)	3/4	200 (516)
6 (152)	68 (1727)	18 1/2 (470)	9 1/4 (235)	34 (864)	24 (610)	18 1/8 (460)	3 3/8 (86)	3/8 (10)	8 3/8 (213)	5 3/8 (137)	7 (178)	14 (356)	6 3/8 (162)	12 (305)	1	600 (16.8)
8 (203)	90 (2286)	18 1/2 (470)	9 1/4 (235)	43 (1092)	32 (813)	21 (533)	4 (102)	1 (25)	9 3/4 (248)	6 5/8 (168)	9 (229)	14 (356)	7 3/8 (187)	12 (305)	1 1/2	1200 (33.6)
10 (254)	103 (2616)	20 1/2 (521)	10 1/4 (260)	54 (1372)	42 (1067)	25 1/4 (641)	4 (102)	1 (25)	11 (279)	8 3/8 (213)	11 (279)	16 (406)	8 3/4 (222)	14 (356)	2	2400 (67.2)
12 (305)	110 (2794)	22 1/2 (572)	11 1/4 (286)	66 (1676)	50 (1270)	25 5/8 (651)	4 (102)	1 (25)	12 (305)	9 (229)	13 (330)	18 (457)	9 7/8 (251)	16 (406)	2	4140 (115.9)
14 (356)	110 (2794)	26 1/2 (673)	13 1/4 (337)	72 (1829)	46 (1168)	26 5/8 (676)	4 (102)	1 (25)	13 (330)	10 (254)	15 (381)	22 (559)	11 1/4 (286)	20 (508)	3	6560 (183.6)
16 (406)	118 (2997)	30 1/2 (775)	15 1/4 (387)	84 (2134)	48 (1219)	27 5/8 (702)	4 (102)	1 (25)	14 (356)	11 (279)	17 (432)	26 (660)	12 1/2 (318)	24 (610)	5	9800 (274.4)

Dimension A will vary with drive.

CONTACT MATERIALS

- Carbon steel
- 304 stainless steel
- 316 stainless steel
- Special alloys

EXTERNAL CONSTRUCTION

Carbon steel

COATINGS

Standard external, machinery enamel

Optional external,

- Epoxy paint
- Corrosion resistant paint
- Customer-specified paints, colors

Standard internal, machinery enamel for carbon steel; stainless and other alloys, uncoated.

Optional internal,

- Epoxy paint

- Teflon coating
- Customer specified

DRIVES

Standard, SCR solid-state DC drives standard 20:1 ratio, potentiometer controlled. 115-230/1/60 power requirement

- NEMA 12 enclosure
- 10-turn potentiometer

Optional,

- Digital rate indication
- Explosion-proof motors and electrical enclosures
- AC variable speed drives with mechanical transmission
- AC motor with variable frequency controller, 230-460/3/60 power requirements
- Special voltages available

SANITARY APPLICATIONS

Standard,

- All internal seams continuously welded
- All welds ground smooth
- Internal surfaces polished to No. 4 finish
- Food grade gaskets and seals

Optional, as above but also includes:

- Guards, covers, etc. retained with wing nuts for quick disassembly
- Special TENV motors
- Structural modifications for ease of cleaning

PRESSURE APPLICATIONS

Metering Conveyors can be constructed for pressure applications up to 14.9 psi

HIGH TEMPERATURE APPLICATIONS

Special modifications permit operation to 350° F.